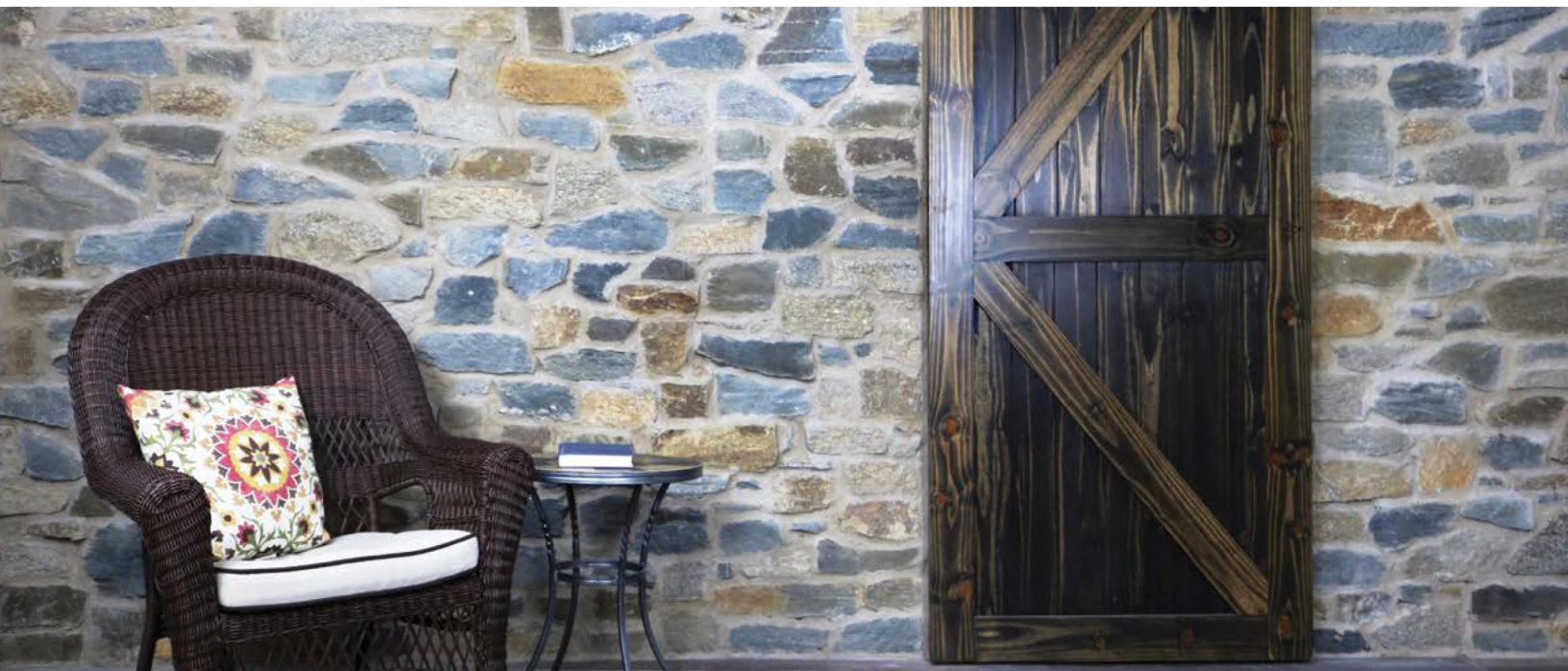




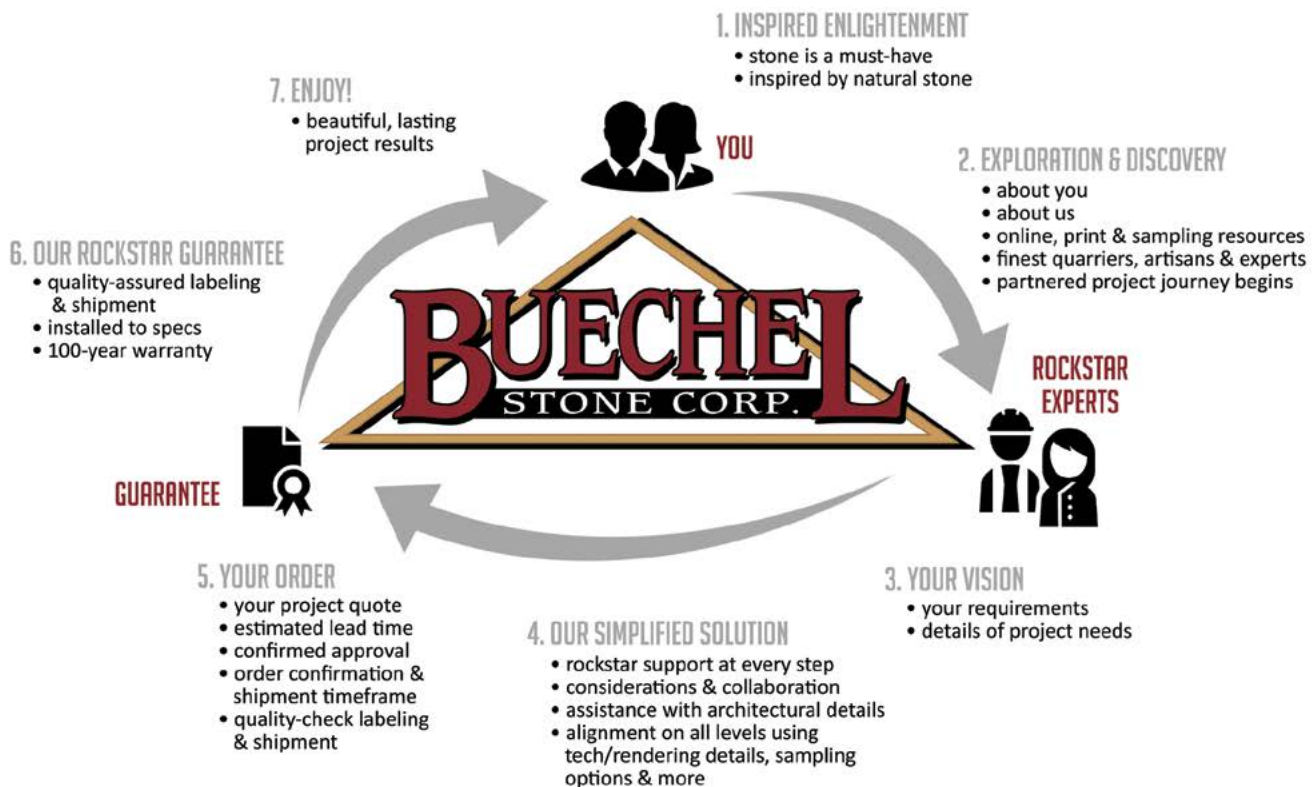
THE ONLY REAL CHOICE IN STONE



Front cover project photos: Fond du Lac Flagstone (*upper left*), Spalted Oak Siena (*middle*), 75 % Fond du Lac Tailored Blend - 25 % Mill Creek Tailored Blend (*bottom*)  
Back cover project photos: 75% Chilton Country Squire - 25% Chilton Country Squire Jumpers - Chilton Outcroppings - Chilton Outcropping Steps (*left*), Fond du Lac Flagstone (*upper right*), Silverdale Tailored Blend with custom heights and rockfaced (*middle right*), 75 % Fond du Lac Tailored Blend - 25 % Mill Creek Tailored Blend (*bottom right*)

# BUECHEL'S WORRY-FREE CLIENT EXPERIENCE

The Buechel Stone proven process focuses on what drives us - our mission to provide the best, most dependable experience in the natural stone industry - guaranteed! Keeping true to our vision of being your first choice because of our unparalleled service and an exceptional selection of natural stone.





THE BUECHEL BIO	04
INSPIRATION PHOTOS	06
BUILDING STONE VENEERS	19
ASHLAR LINE	20
CASTLE ROCK LINE	32
DIMENSIONAL LINE	36
FIELDLEDGE LINE	42
LEDGESTONE LINE	48
MOSAIC LINE	54
TAILORED FIELDLEDGE LINE	62
CUT STONE	66
LANDSCAPE STONE	74
REFERENCE/THANK YOU	88





Founded by Francis & Alyce Buechel  
1964



# BEFORE WE HAD A COMPANY, THEY HAD COURAGE, GRIT, BELIEF, AND SOMEWHAT OF A PLAN.

---

Courage - that's pretty much all Francis & Alyce Buechel had to rely on when they converted their 125-acre family farm to a quarry and founded Buechel Stone in 1964. Since then, their passion has multiplied.

With sweat equity and the conviction to literally 'bet the farm' for BUECHEL STONE's future, growth was pivotal. Ma and Pa Buechel were determined. They achieved progress through the grit of trial and error. As a company, we've experienced our share of set-backs and mistakes. But hey, that's all part of our journey.

We got some things right. In fact, BUECHEL STONE pioneered some pretty incredible innovations: the production and promotion of Natural Thin Veneer, a weep installation system, formalized dealer

training across North America, and the largest library of Autodesk-certified architectural content for full & thin stone veneers available in BIM, 3D, & 2D software applications.

Somehow along the way, everyone became part of something bigger - not to be measured in increments of acreage or currency. Instead, we live by a greater MISSION: providing the best, most dependable experience in the natural stone industry - guaranteed!

Our VISION: to become your first choice because of unparalleled service and an exceptional selection of natural stone. And keeping true to our mission - every product has been carefully articulated to work in harmony with today's sophisticated project requirements.

FOND DU LAC KENSINGTON BLEND 85% AND MILL CREEK CASTLE ROCK 15%

# DREAM HOMES

FOND DU LAC COUNTRY SQUIRE



FOND DU LAC TAILORED BLEND 75% AND MILL CREEK TAILORED BLEND 25%

SPALTED OAK WEBWALL WITH FOSSIL SPIRE CUT STONE



# DREAM HOMES



BARNWOOD BLUE CASTLE ROCK 30% - BLACK FROST CASTLE ROCK 30% - HIGHLAND SCOTCH CASTLE ROCK 40%

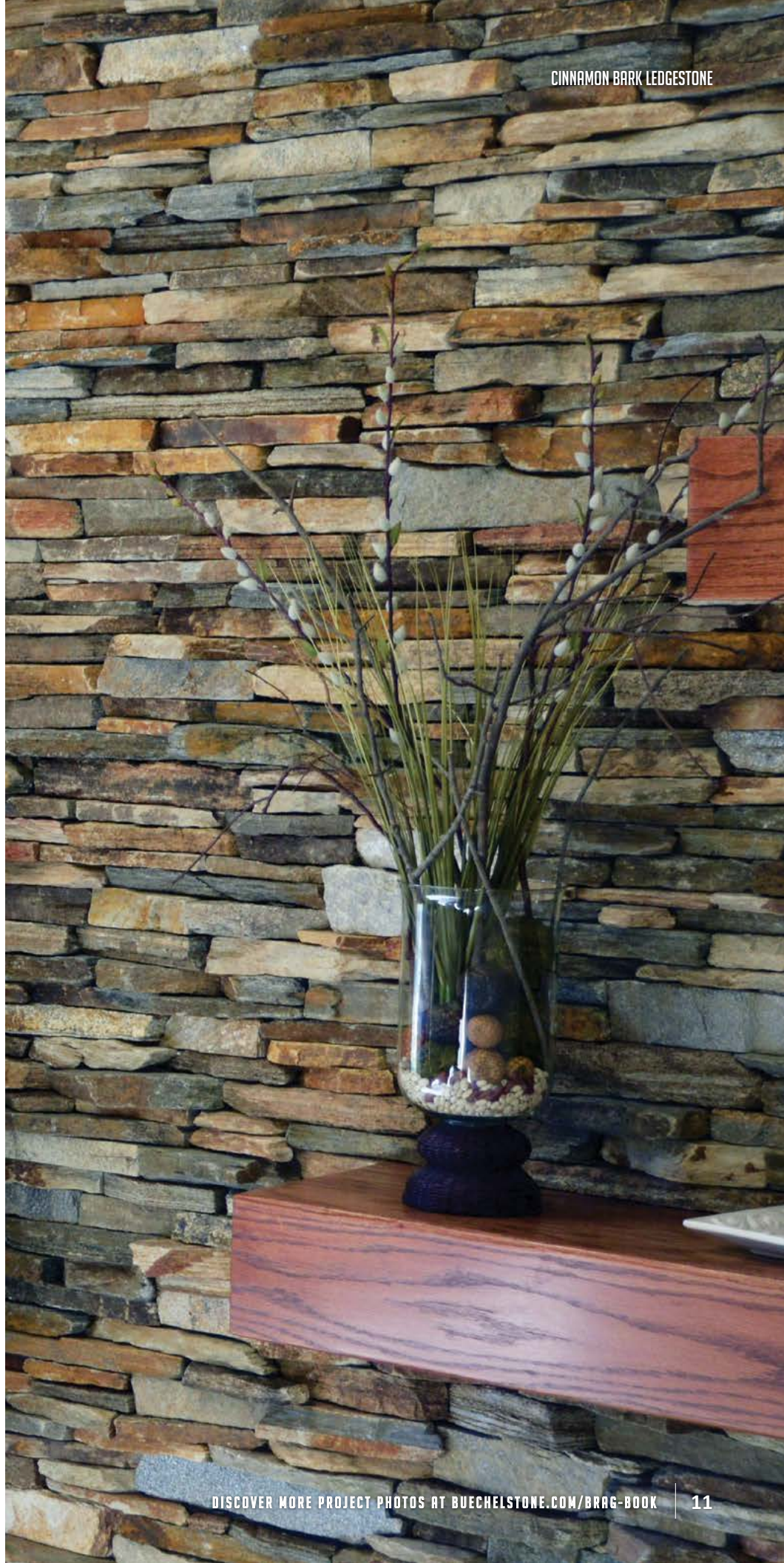


FOND DU LAC COUNTRY SQUIRE 70% - FOND DU LAC WEBWALL 30%

SPALTED OAK LEDGESTONE AND SPALTED OAK SIENA

# INTERIOR DESIGN

FOND DU LAC TAILORED BLEND 75% AND MILL CREEK TAILORED BLEND 25%



CINNAMON BARK LEDGESTONE



BLACK FROST ASHLAR



# FIREPLACES



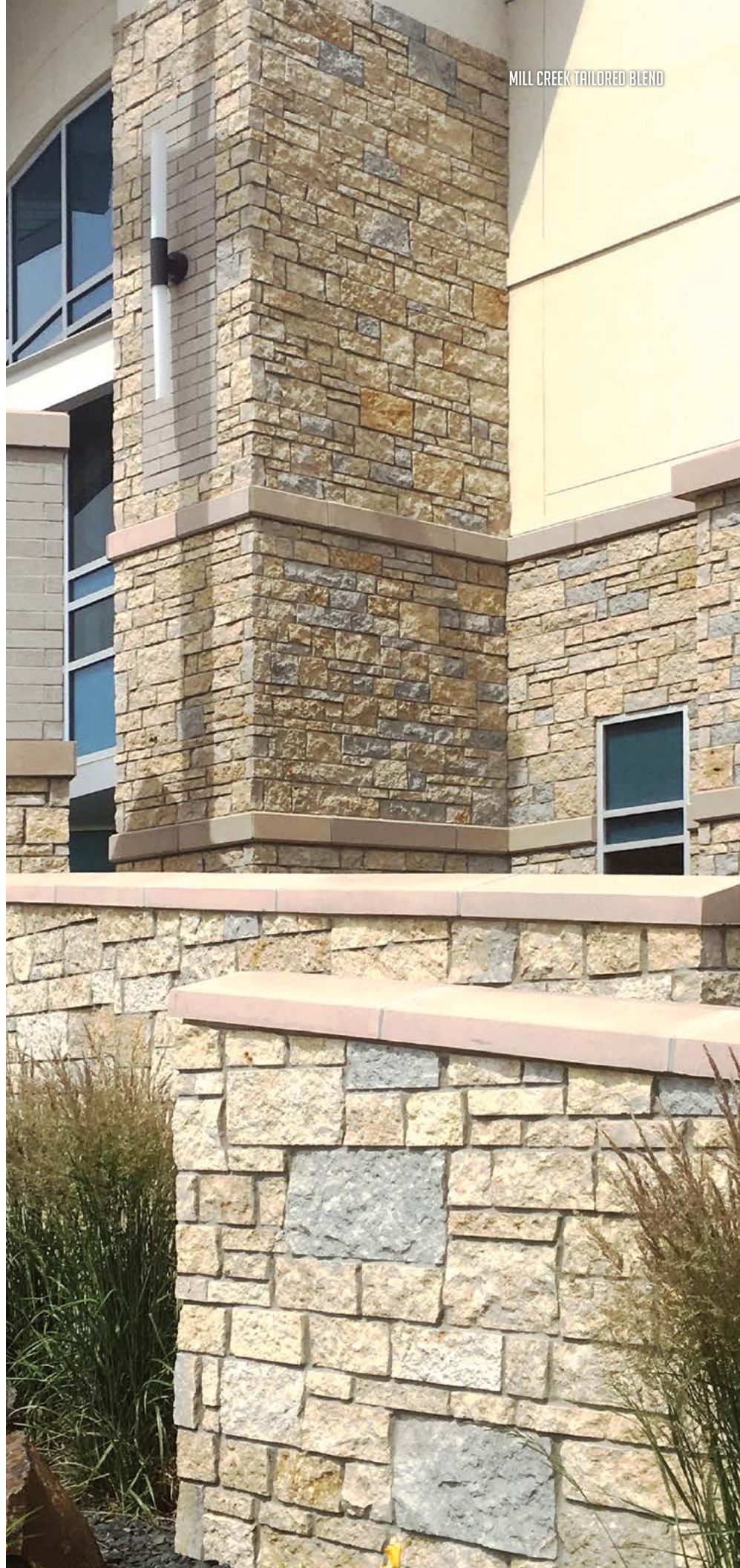
FOND DU LAC TAILORED BLEND 70% - BUFF GRAY TAILORED BLEND 30%



BARNWOOD BLUE CASTLE ROCK



MILL CREEK TAILORED BLEND



# COMMERCIAL DESIGN

COATS INNOVATION HUB  
AMERICA



# COMMERCIAL DESIGN

FOND DU LAC RUSTIC



CHILTON RUSTIC



CHILTON TAILORED BLEND AND FOND DU LAC TAILORED BLEND



SILVERDALE PANELS

CHILTON HERITAGE BLEND 90% AND FOND DU LAC WEBWALL 10%



# BUILDING STONE VENEERS

## THIN VENEER

Durable, lightweight, natural thin option with ~3/4" to 1-1/4" bed depth for quicker installations.

## PATTERNS

Nine pattern lines including every shape and size, or create a custom version to fit your project.

## FULL VENEER

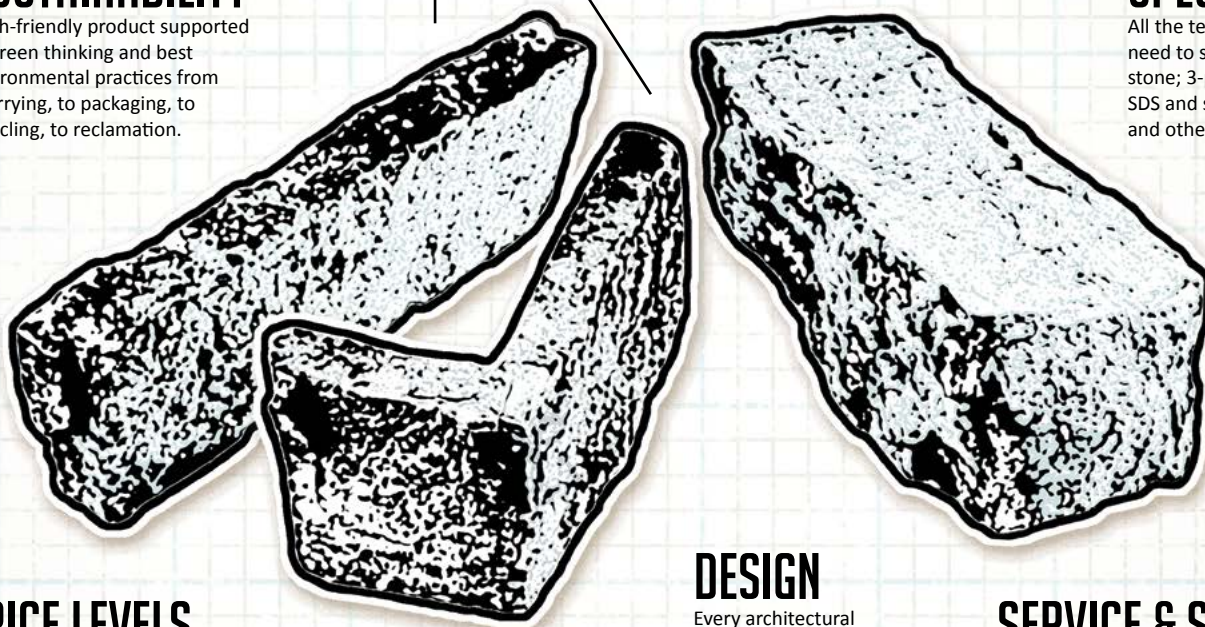
Traditional, gold standard with ~4" bed depth for most versatile installation options.

## SUSTAINABILITY

Earth-friendly product supported by green thinking and best environmental practices from quarrying, to packaging, to recycling, to reclamation.

## SPEC & TECH

All the tech data you need to specify our stone; 3-part specs, SDS and safety, ASTM and other test data.



## PRICE LEVELS

A price level for every budget.

\$ bronze  
\$\$ silver  
\$\$\$ gold  
\$\$\$\$ platinum

## COLOR TONES

Striking color variations based on six main tones for endless style and color possibilities.



## DESIGN

Every architectural asset imaginable; BIM, CAD, 3D, wall system dwgs, high-res swatches, project photos, and more.

## SERVICE & SAMPLES

Request complimentary samples (free except for shipping) plus the option to order samples or build a quote online. Better yet, contact us to request additional info - we love hearing from you!



FOND DU LAC COUNTRY SQUIRE



FOND DU LAC COUNTRY SQUIRE

# ASHLAR



FOND DU LAC RUSTIC WITH CHANTILLY LACE CUT STONE DETAILS



**MILL CREEK KENSINGTON BLEND**

Honey ♦  
\$\$



**FOND DU LAC RUSTIC**

Honey ♦  
\$\$\$



**CHILTON SEDONA RUSTIC**  
 Fiery ♦  
 \$\$\$



**CHILTON RUSTIC**  
 Fiery ♦ Earth ♦  
 \$\$\$



**CHILTON RUSTIC NO REDS**  
 Earth ♦  
 \$\$\$



**TENNESSEE SPLITFACE**  
 Earth ♦ Honey ♦  
 \$\$\$\$



**CHILTON SEDONA RUSTIC**





**MILL CREEK COUNTRY SQUIRE**

Honey ♦  
\$\$



**HIGHLAND SCOTCH ASHLAR**

Honey ♦  
\$\$\$\$



**SILVER PATINA ASHLAR**  
 Shadow ♦ Earth ♦  
 \$\$\$



**BARNWOOD BLUE ASHLAR**  
 Shadow ♦  
 \$\$\$\$



**SPALTED OAK ASHLAR**  
 Shadow ♦ Honey ♦  
 \$\$\$\$



**BLACK FROST ASHLAR**  
 Shadow ♦  
 \$\$\$\$



**CABIN CREEK RIVER ROCK**  
 Sky ♦ Earth ♦  
 \$\$\$



**CHILTON KENSINGTON BLEND**  
 Sky ♦ Fiery ♦  
 \$



**CHILTON COUNTRY SQUIRE**

Sky ♦  
\$



**CHILTON COUNTRY SQUIRE JUMPERS**

Sky ♦  
\$\$



**CHILTON CAMBRIAN BLEND**

Sky ♦ Earth ♦  
\$\$



**CHILTON CUSTOM COUNTRY BLEND**

Sky ♦ Earth ♦  
\$\$



**STRATFORD CROSS**

Sky ♦ Arctic ♦  
\$



**COLONIAL GRAY RIVER ROCK**

Sky ♦  
\$\$\$



STRATFORD CROSS



**CHARCOAL COUNTRY SQUIRE**

Sky ♦  
\$\$



**FOND DU LAC COUNTRY SQUIRE**

Arctic ♦

\$



**FOND DU LAC COUNTRY SQUIRE JUMPERS**

Arctic ♦

\$\$



**FOND DU LAC CUSTOM COUNTRY BLEND**

Arctic ♦ Honey ♦

\$\$



**WHITE COUNTRY SQUIRE**

Arctic ♦

\$\$



**FOND DU LAC CAMBRIAN BLEND**

Arctic ♦ Honey ♦

\$\$



**CREAM CITY RIVER ROCK**

Arctic ♦

\$\$\$





**FOND DU LAC KENSINGTON BLEND**

Arctic ♦  
\$



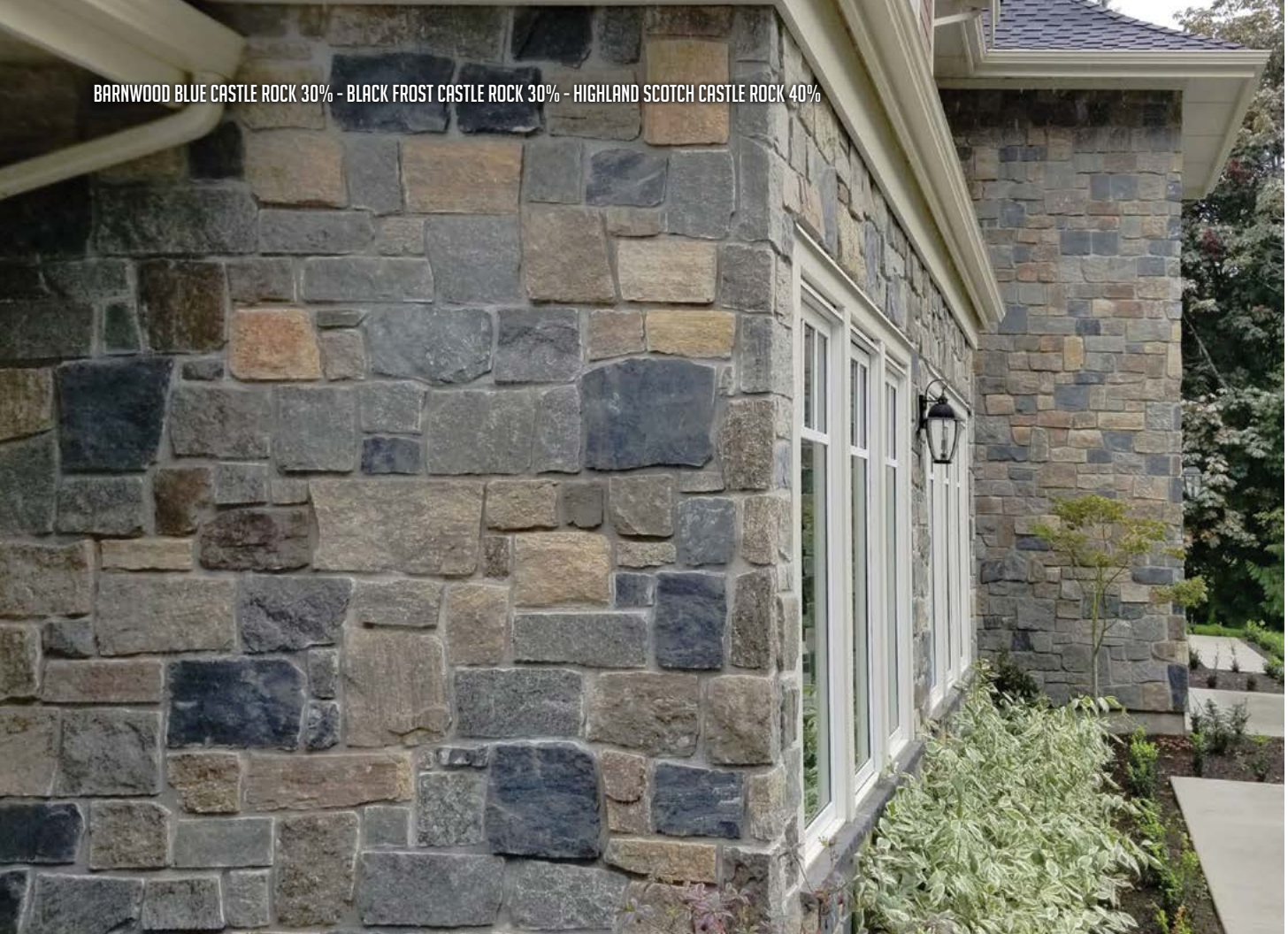
**JUTE CLOTH COUNTRY SQUIRE**

Arctic ♦  
\$

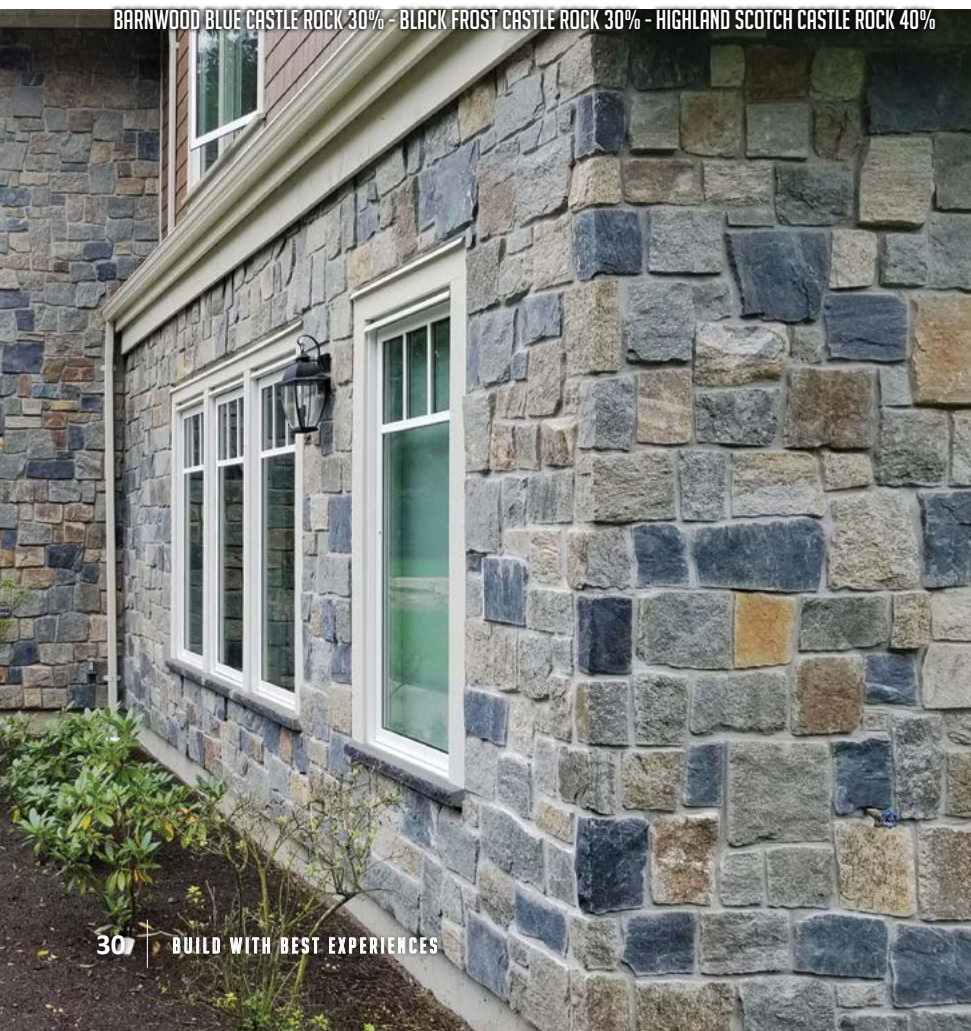
FOND DU LAC KENSINGTON BLEND



BARNWOOD BLUE CASTLE ROCK 30% - BLACK FROST CASTLE ROCK 30% - HIGHLAND SCOTCH CASTLE ROCK 40%



BARNWOOD BLUE CASTLE ROCK 30% - BLACK FROST CASTLE ROCK 30% - HIGHLAND SCOTCH CASTLE ROCK 40%



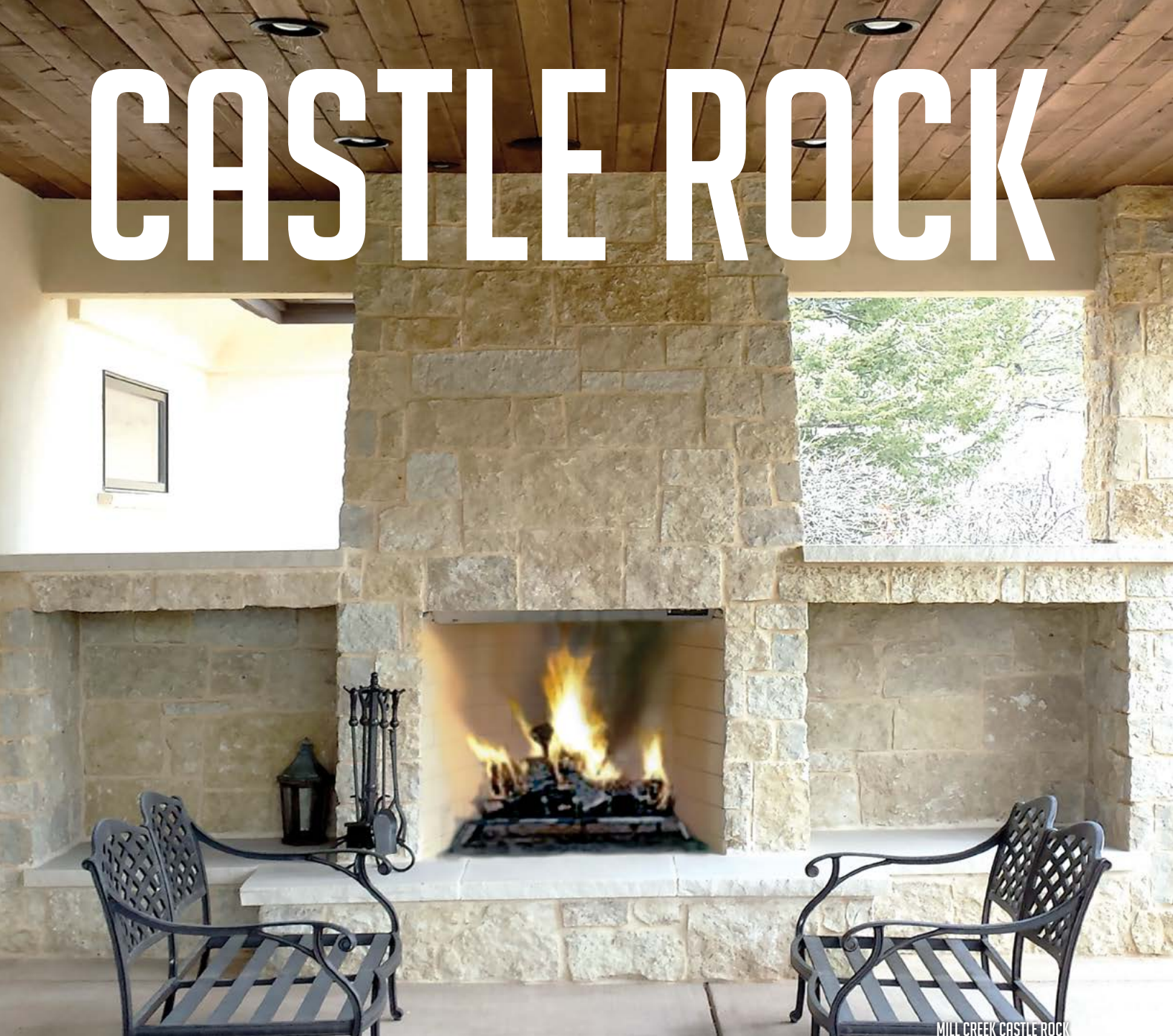


BARNWOOD BLUE CASTLE ROCK 30% - BLACK FROST CASTLE ROCK 30% - HIGHLAND SCOTCH CASTLE ROCK 40%

BARNWOOD BLUE CASTLE ROCK 30% - BLACK FROST CASTLE ROCK 30% - HIGHLAND SCOTCH CASTLE ROCK 40%



# CASTLE ROCK



**ANTIQUE COPPER COUNTRY CASTLE ROCK**

Earth ♦ Fiery ♦

SSSS



**FULL COLOR CASTLE ROCK**

Fiery ♦ Sky ♦

SS



**SHADY OAK CASTLE ROCK**  
 Earth ♦ Shadow ♦  
 \$\$\$



**ANTIQUE BRONZE COUNTRY CASTLE ROCK**  
 Earth ♦ Shadow ♦  
 \$\$\$\$



**MILL CREEK CASTLE ROCK**  
 Honey ♦  
 \$\$\$



**HIGHLAND SCOTCH CASTLE ROCK**  
 Honey ♦  
 \$\$\$

**FULL COLOR CASTLE ROCK**





**JUTE CLOTH CASTLE ROCK**

Arctic ♦  
 \$\$



**SILVER PATINA CASTLE ROCK**

Shadow ♦ Earth ♦  
 \$\$



**SPALTED OAK CASTLE ROCK**



**SPALTED OAK CASTLE ROCK**

Shadow ♦ Honey ♦

\$\$\$



**BARNWOOD BLUE CASTLE ROCK**

Shadow ♦

\$\$\$



**BLACK FROST CASTLE ROCK**

Shadow ♦

\$\$\$



**ANTIQUE BLACK CASTLE ROCK**

Shadow ♦

\$\$\$



**BUFF GRAY CASTLE ROCK**

Sky ♦ Shadow ♦

\$\$



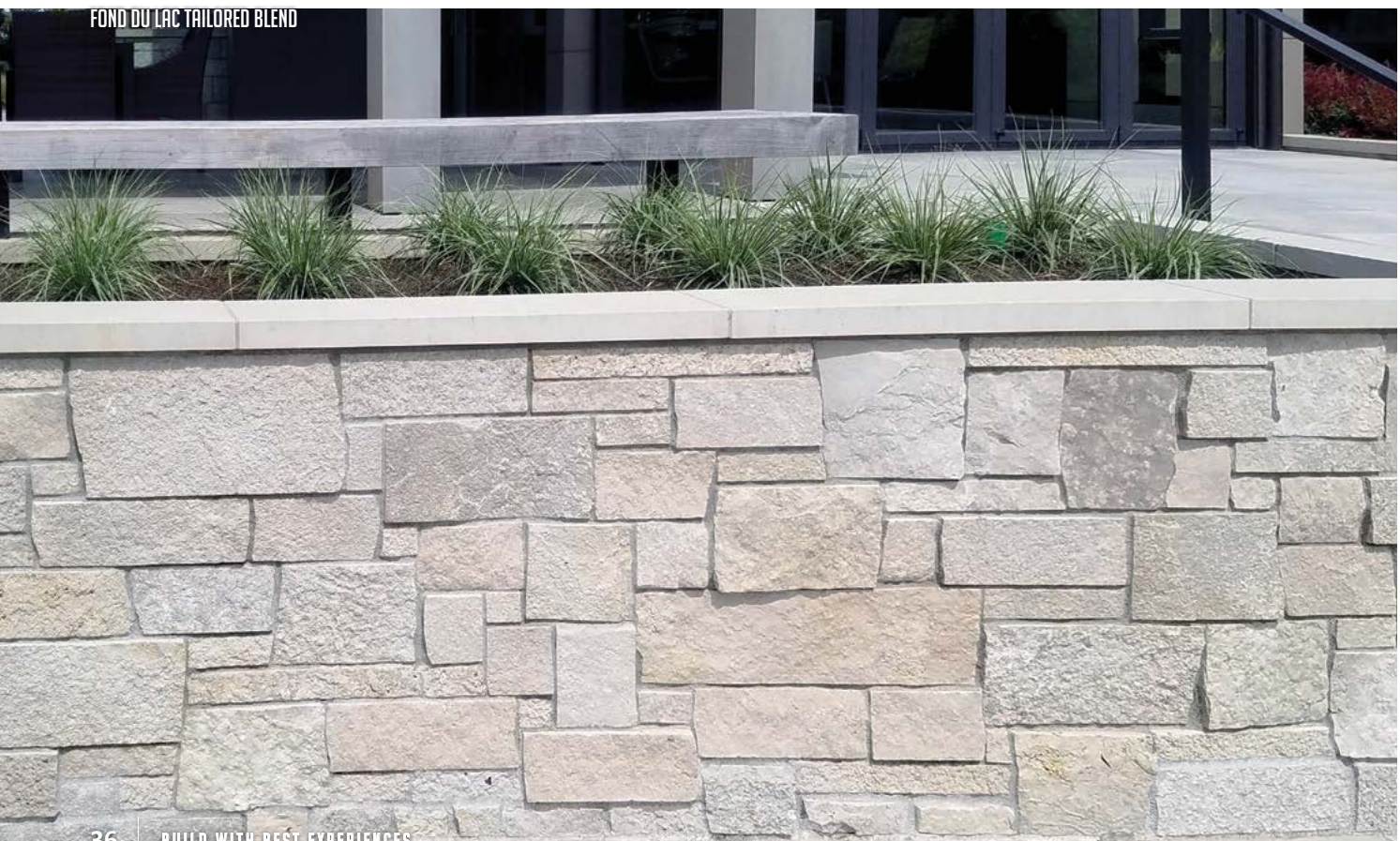
**FOND DU LAC CASTLE ROCK**

Arctic ♦

\$\$



FOND DU LAC TAILORED BLEND



FOND DU LAC TAILORED BLEND



FOND DU LAC TAILORED BLEND



FOND DU LAC TAILORED BLEND



**AGED PARCHMENT TAILORED BLEND**  
 Honey ♦  
 \$\$\$\$



**MILL CREEK TAILORED BLEND**  
 Honey ♦  
 \$\$\$\$



MILL CREEK TAILORED BLEND



**SILVERDALE TAILORED BLEND**  
 Honey ♦  
 \$\$\$



**CHILTON TAILORED BLEND**  
 Sky ♦ Fiery ♦  
 \$\$\$

# DIMENSIONAL



BUFF GRAY TAILORED BLEND



**CHILTON TAILORED BLEND 50% ROCKFACED**

Sky ♦ Fiery ♦  
SSSS



**BUFF GRAY TAILORED BLEND**

Sky ♦ Shadow ♦  
SSSS



**CHILTON SHABBY-CHIC TAILORED BLEND**

Sky ♦  
SSSS



**INDIANA DIMENSIONAL**

Arctic ♦  
SSS



FOND DU LAC SHABBY-CHIC TAILORED BLEND



INDIANA DIMENSIONAL



FOND DU LAC TAILORED BLEND



**FOND DU LAC TAILORED BLEND 50% ROCKFACED**  
Arctic ♦  
\$\$\$\$



**JUTE CLOTH TAILORED BLEND**  
Arctic ♦  
\$\$\$



**FOND DU LAC SHABBY-CHIC TAILORED BLEND**  
Arctic ♦  
\$\$\$\$



**FOND DU LAC TAILORED BLEND**  
Arctic ♦  
\$\$\$

CHILTON HERITAGE BLEND 90% FOND DU LAC WEBWALL 10%



CHILTON HERITAGE BLEND 90% FOND DU LAC WEBWALL 10%





CHILTON HERITAGE BLEND 90% FOND DU LAC WEBWALL 10%



CHILTON HERITAGE BLEND 90% FOND DU LAC WEBWALL 10%

HIGHLAND SCOTCH SIENA

# FIELDLEDGE



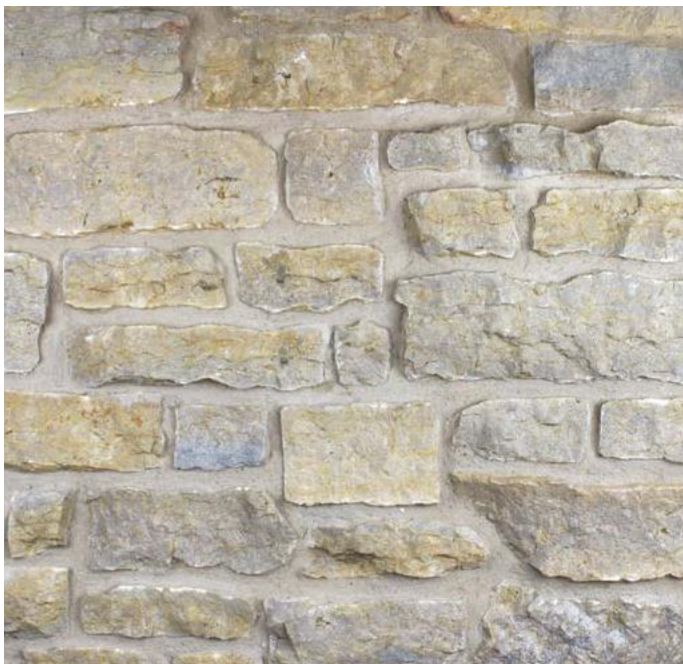
**TAMARACK SIENA**

Earth ♦  
\$\$\$\$



**AUTUMN SIENA**

Earth ♦ Honey ♦  
\$\$\$



**MILL CREEK SIENA**

Honey ♦  
\$



**MILL CREEK COLONIAL BLEND**

Honey ♦  
\$\$



**HIGHLAND SCOTCH SIENA**

Honey ♦  
\$\$



**SPALTED OAK SIENA**

Shadow ♦ Honey ♦  
\$\$



SPALTED OAK SIENA



**WHISPERING PINES PIONEER BLEND**

Shadow ♦  
 \$\$\$\$



**BARNWOOD BLUE SIENA**

Shadow ♦  
 \$\$



**SILVER PATINA SIENA**

Shadow ♦ Earth ♦  
 \$\$



**BLACK FROST SIENA**

Shadow ♦  
 \$\$



**CHILTON HERITAGE BLEND**

Sky ♦ Fiery ♦  
 \$



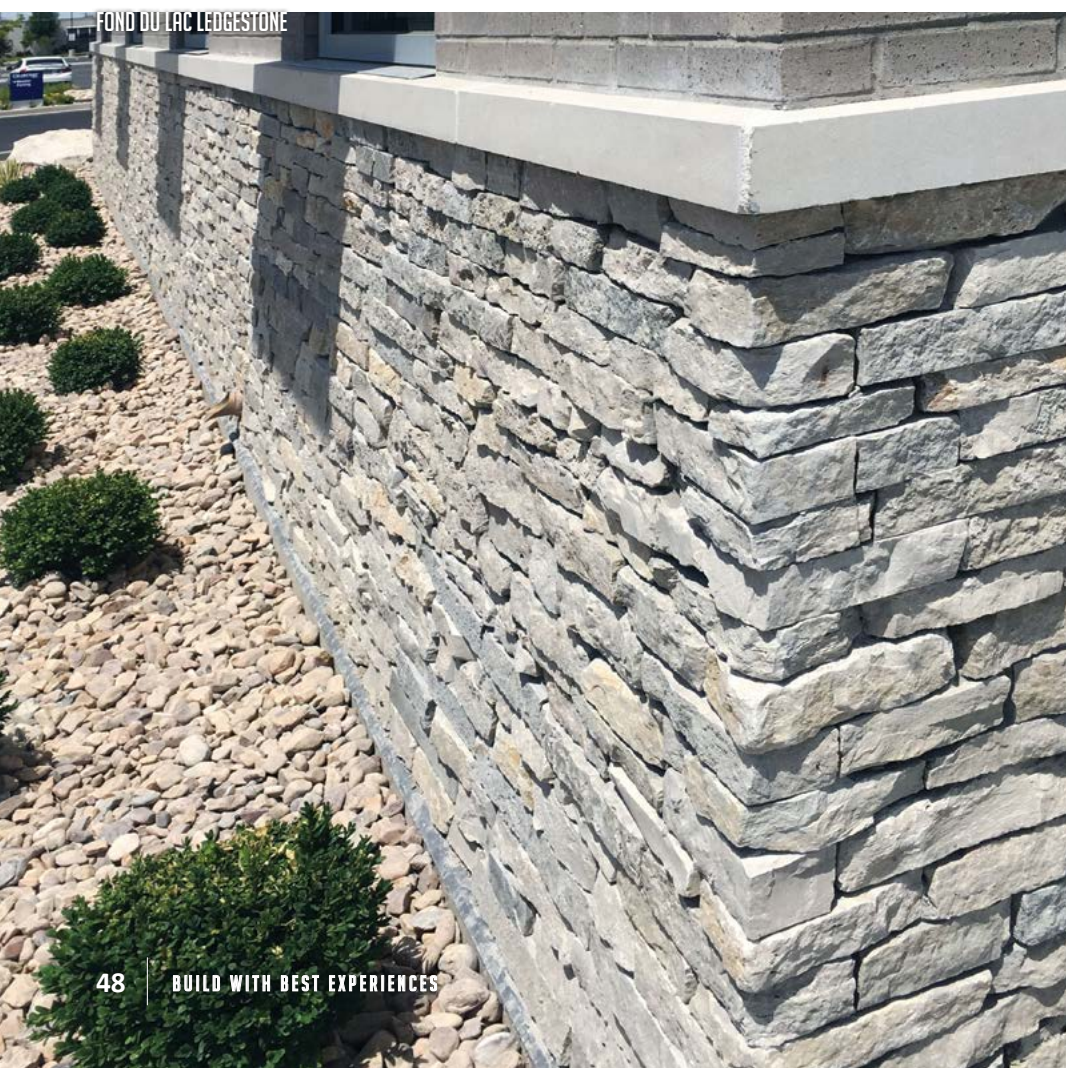
**KOHLER HERITAGE BLEND**  
Arctic ♦ Honey ♦  
\$\$



**FOND DU LAC HERITAGE BLEND**  
Arctic ♦ Honey ♦  
\$



FOND DU LAC HERITAGE BLEND





FOND DU LAC LEDGESTONE



# LEDGESTONE



CINNAMON BARK LEDGESTONE



**CHILTON RUSTIC LEDGESTONE**

Earth ♦ Fiery ♦

\$\$\$\$



**CINNAMON BARK LEDGESTONE**

Earth ♦

\$\$



**FOND DU LAC RUSTIC LEDGESTONE**

Honey ♦

\$\$\$\$



**HIGHLAND SCOTCH LEDGESTONE**

Honey ♦

\$\$\$



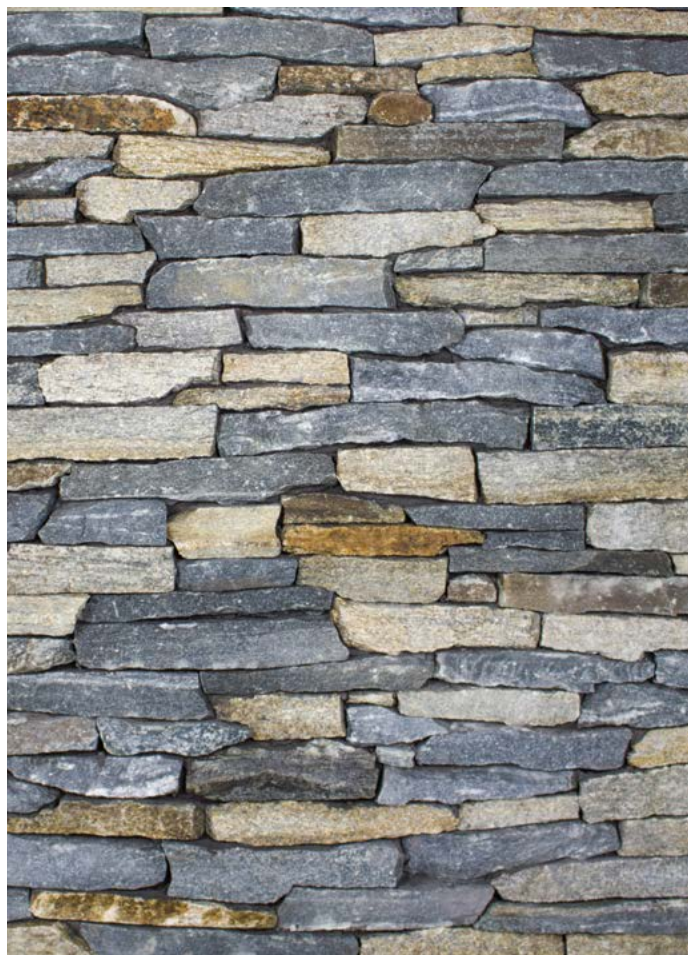
**SILVER PATINA LEDGESTONE**  
Shadow ♦ Earth ♦  
\$\$\$



**BLACK FROST LEDGESTONE**  
Shadow ♦  
\$\$\$



SPALTED OAK LEDGESTONE



**SPALTED OAK LEDGESTONE**  
Shadow ♦ Honey ♦  
\$\$\$



**WHISPERING PINES LEDGESTONE**

Shadow ♦  
 \$\$\$\$



**BARNWOOD BLUE LEDGESTONE**

Shadow ♦  
 \$\$\$



**CHILTON LEDGESTONE**

Sky ♦ Earth ♦  
 \$\$



**FOND DU LAC LEDGESTONE**

Arctic ♦ Honey ♦  
 \$\$

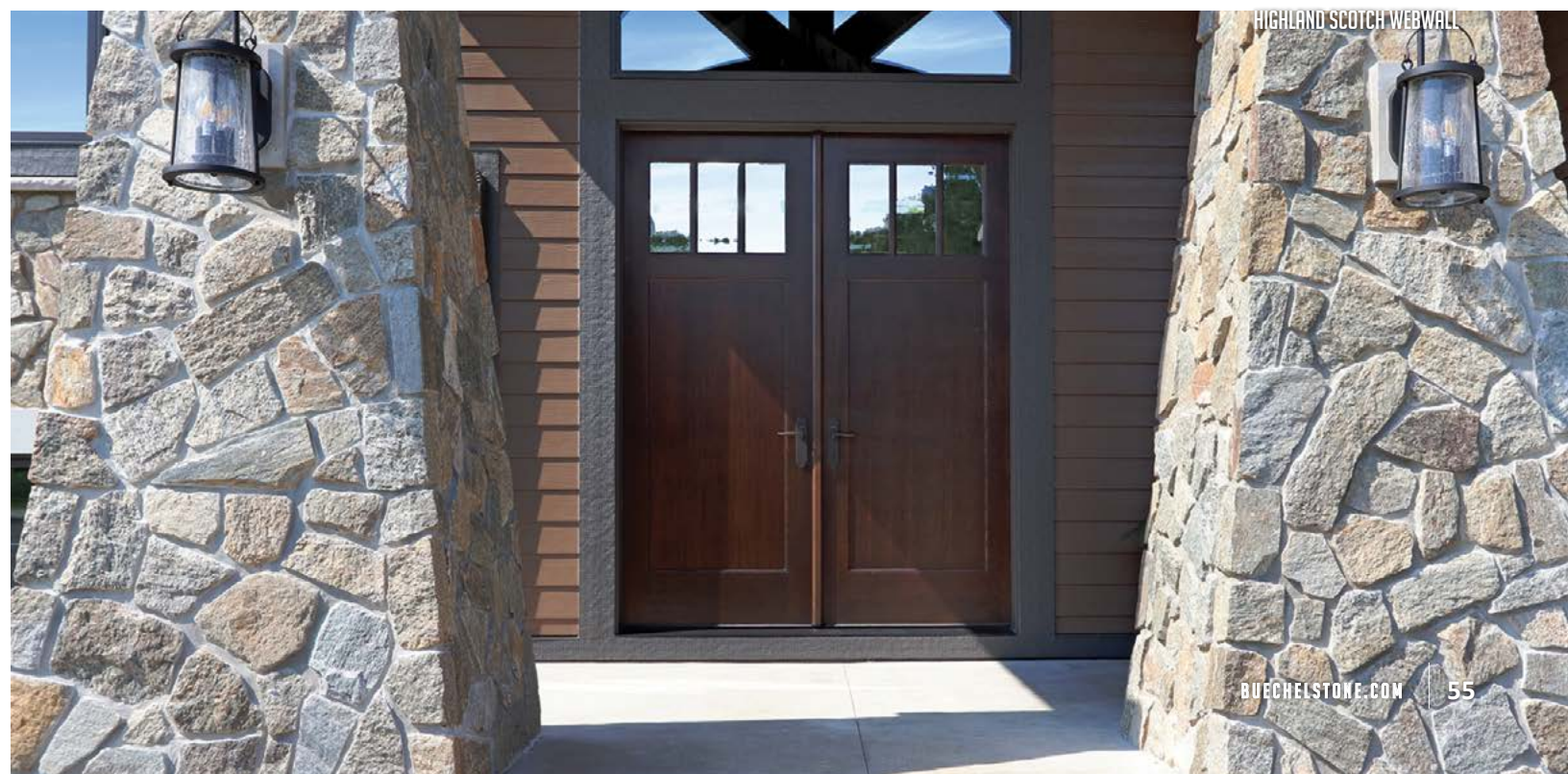






HIGHLAND SCOTCH WEBWALL





# MOSAIC



ANTIQUE COPPER FIELDSTONE



**ANTIQUE COPPER FIELDSTONE**

Earth ♦ Fiery ♦

\$\$\$



**TAMARACK FIELDSTONE**

Earth ♦

\$\$\$



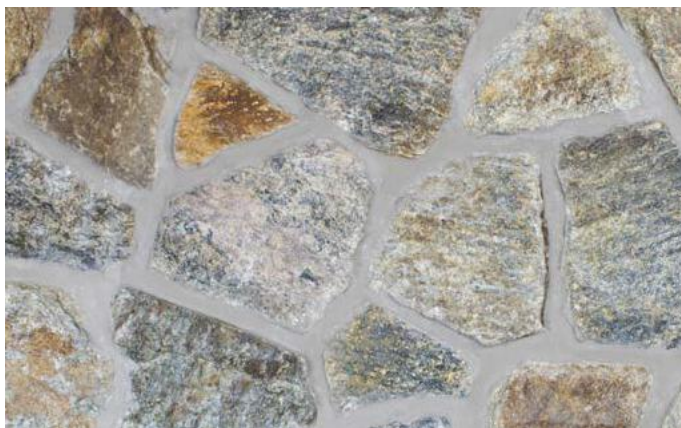
### MILL CREEK WEBWALL

Honey ♦  
\$



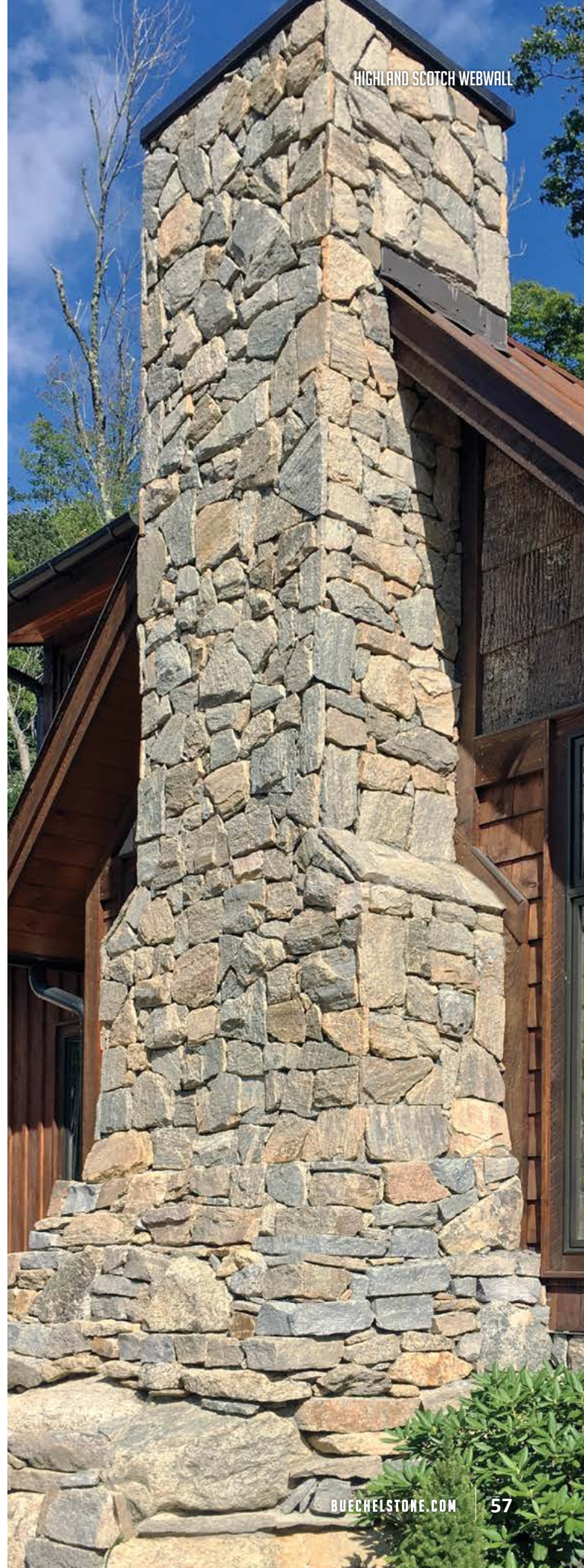
### ANTIQUE BRONZE FIELDSTONE

Earth ♦ Shadow ♦  
\$\$\$



### HIGHLAND SCOTCH WEBWALL

Honey ♦  
\$



HIGHLAND SCOTCH WEBWALL



GRANITE COBBLES



**OZARK FIELDSTONE**  
Earth ♦ Shadow ♦  
\$\$\$



**WHISPERING PINES FIELDSTONE**  
Shadow ♦  
\$\$



### SPLIT GRANITE FIELDSTONE

Shadow ♦ Fiery ♦

\$\$\$



### GRANITE COBBLES

Shadow ♦ Fiery ♦

\$\$\$



### BRUSHED STEEL WEBWALL

Shadow ♦

\$



### SILVER PATINA WEBWALL

Shadow ♦ Earth ♦

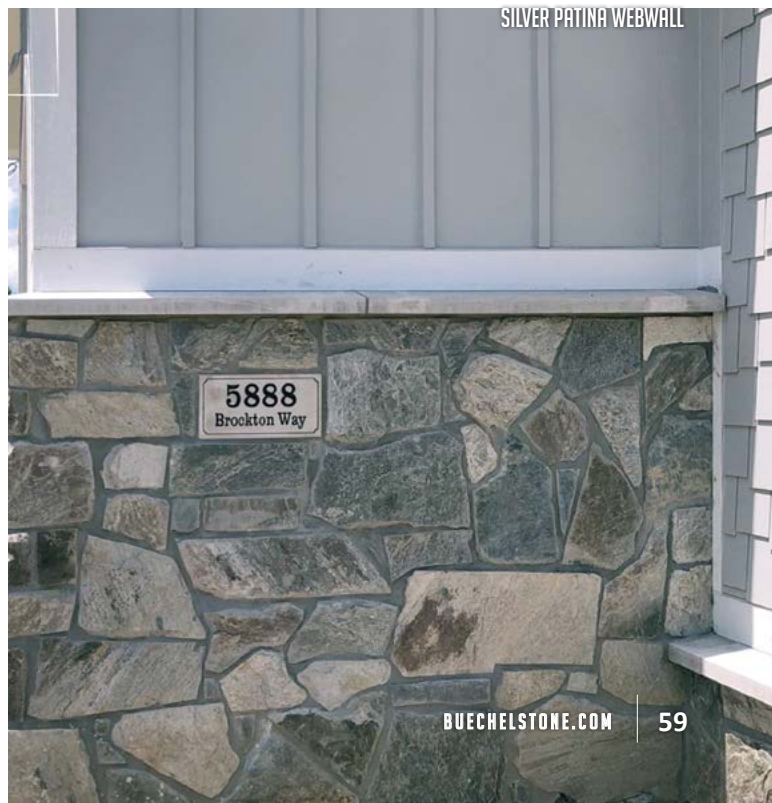
\$



### ANTIQUE BLACK WEBWALL

Shadow ♦

\$





**AQUA TERRA WEBWALL**

Shadow ♦ Honey ♦  
\$



**SPALTED OAK WEBWALL**

Shadow ♦ Honey ♦  
\$



**BLACK FROST WEBWALL**

Shadow ♦  
\$



**BARNWOOD BLUE WEBWALL**

Shadow ♦  
\$



SPALTED OAK WEBWALL WITH FOSSIL SPIRE CUT STONE



**DOOR COUNTY COBBLES**

Arctic ♦  
\$



**BLUE RIDGE RIVER ROCK**  
 Sky ♦ Shadow ♦  
 \$\$



**BYRON RIVER ROCK**  
 Arctic ♦  
 \$\$



**CHILTON WEBWALL**  
 Sky ♦ Shadow ♦  
 \$



**FOND DU LAC WEBWALL**  
 Arctic ♦  
 \$



# TAILORED FIELDLEDGE

SPALTED OAK TAILORED FIELDLEDGE

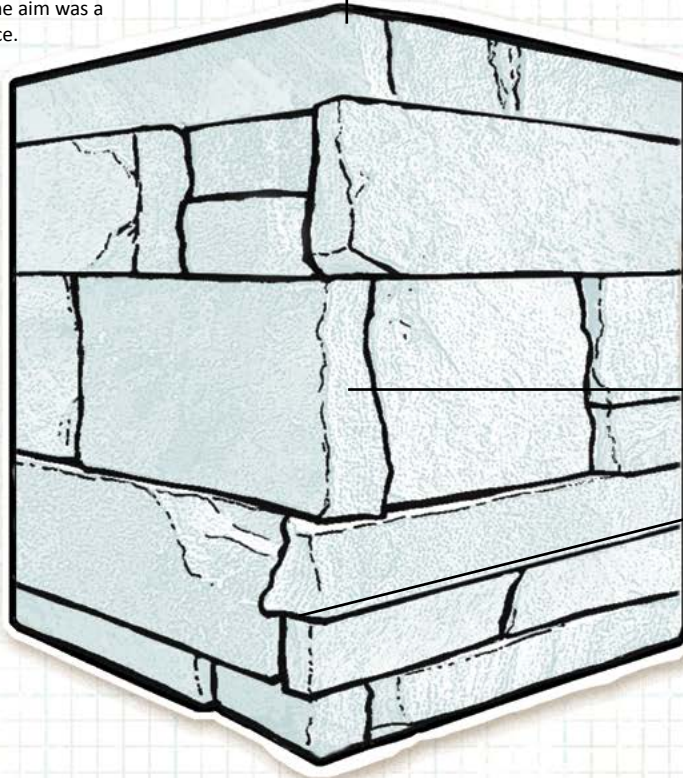


## DEFINITION

Tailored Fieldledge combines the historic appearance of rubble stone with precision-sawn heights for simplified installation. The clean horizontal lines offer a throwback to classic Art Deco design, which offered rectangular blocky forms often arranged in geometric fashion, but always the aim was a monolithic appearance.

## CORNERS

When working with either our Tailored Fieldledge or Tailored LedgeStone Lines, 90° corner returns are not used. Instead, corner pieces have one square natural end and one irregular (Tailored Fieldledge) or sawn end (Tailored LedgeStone).



## NATURAL SQUARED END

Corners are formed by abutting the corner piece at a right angle with the square edge of a neighboring natural thin veneer flat. The resulting butt joint leaves the natural square end of the corner piece exposed.

## NTV ONLY

Our Tailored Fieldledge and Tailored LedgeStone Lines are only available in Natural Thin Veneer.



### SPALTED OAK TAILORED FIELDLEDGE

Shadow ♦ Honey ♦

SSSS



HIGHLAND SCOTCH TAILORED FIELDLEDGE



HIGHLAND SCOTCH TAILORED FIELDLEDGE

Honey ♦  
\$\$\$\$



CHILTON TAILORED FIELDLEDGE

Sky ♦ Fiery ♦  
\$\$\$



BLACK FROST TAILORED FIELDLEDGE

Shadow ♦  
\$\$\$\$



**BARNWOOD BLUE TAILORED FIELDLEDGE**  
Shadow ♦  
\$\$\$\$



**FOND DU LAC TAILORED FIELDLEDGE**  
Arctic ♦  
\$\$\$

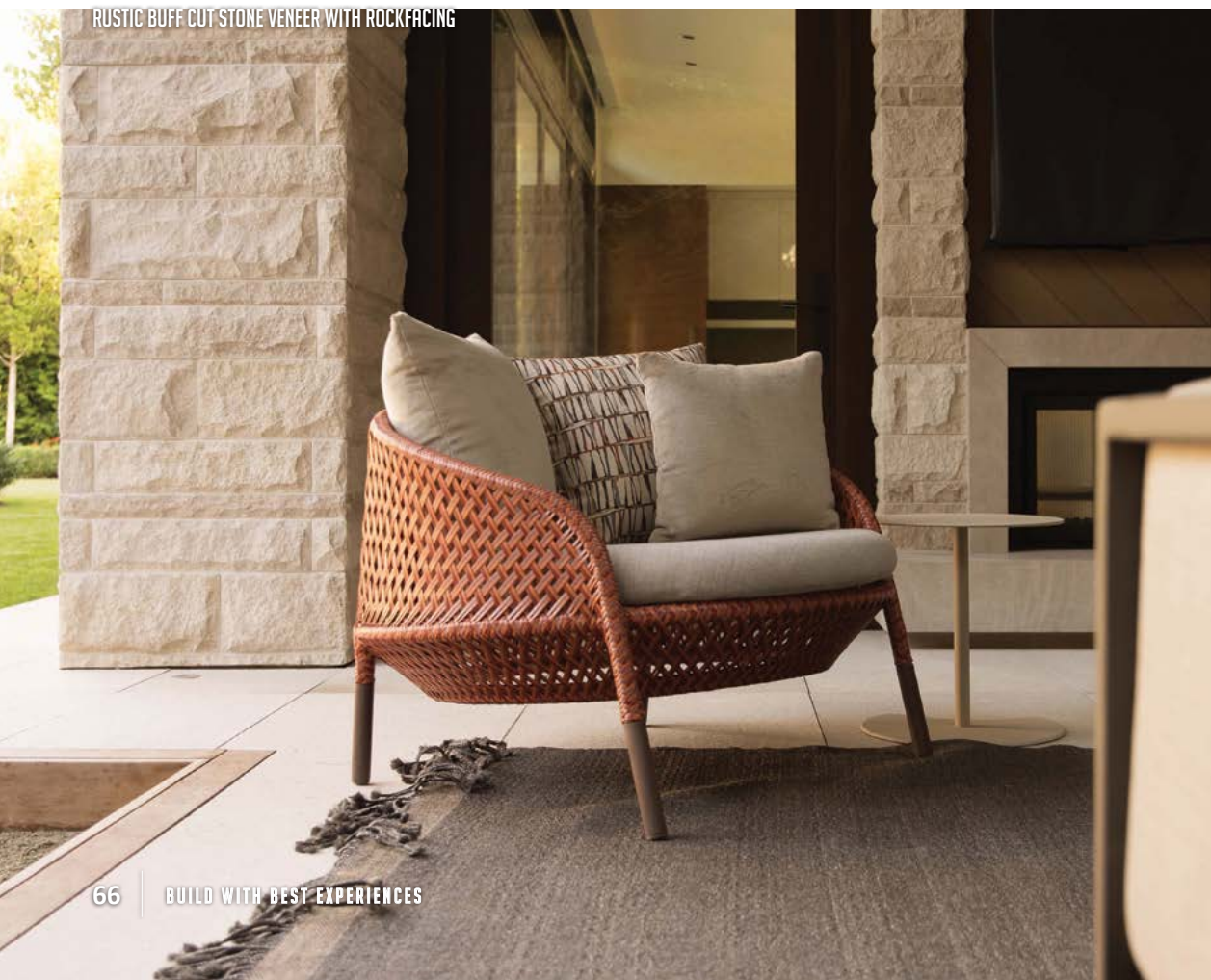


BARNWOOD BLUE TAILORED FIELDLEDGE

RUSTIC BUFF CUT STONE VENEER WITH ROCKFACING



RUSTIC BUFF CUT STONE VENEER WITH ROCKFACING





RUSTIC BUFF CUT STONE VENEER WITH ROCKFACING



RUSTIC BUFF CUT STONE VENEER WITH ROCKFACING



CHANTILLY LACE CUT STONE

# CUT STONE



**HARVEST STRAW CUT STONE [SANDED]** br bh sb sa ve  
Honey ♦

**CHANTILLY LACE CUT STONE [SANDED]** br bh sb sa ve  
Honey ♦

## Different finishes available:



### **br** Brushed

*adj.*  
Smooth rippled texture that creates a satin finish.



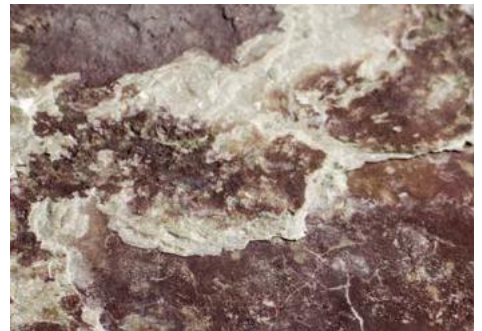
### **bn** Burnished

*adj.*  
Textured finish that has been rubbed smooth.



### **bh** Bushhammered

*adj.*  
Rough dimpled finish.



### **nt** Natural

*adj.*  
As Mother Nature intended it to be.



### **sb** Sandblasted

*adj.*  
Fine-coarse texture.



### **sa** Sanded

*adj.*  
Smooth matte finish.



### **th** Thermalled

*adj.*  
Rough-course texture giving an unrefined finish.

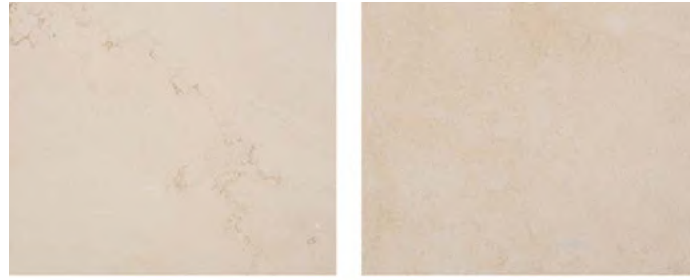


### **ve** Velour

*adj.*  
Full-grained leather finish.



AGED PARCHMENT CUT STONE [SPLITFACE SHOWN]



SILVERDALE CUT STONE [SANDED] br bh sb sa ve

Honey ♦



MILL CREEK CUT STONE [THERMALLED] br bn bh nt sb sa th ve

Honey ♦ Sky ◆



AGED PARCHMENT CUT STONE [SANDED] br bn bh nt sb sa th ve

Honey ♦



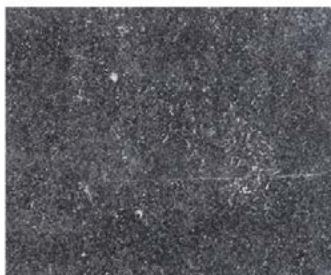
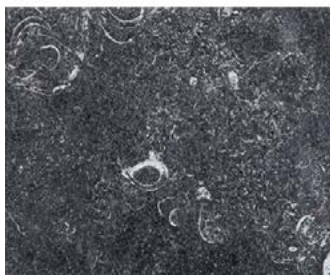
**MILL CREEK CUT STONE (NATURAL CLEFT)** br bn bh nt sb sa th ve  
Honey ♦



**FOSSIL SPIRE CUT STONE (THERMALLED)** br bn bh sb sa th ve  
Shadow ♦

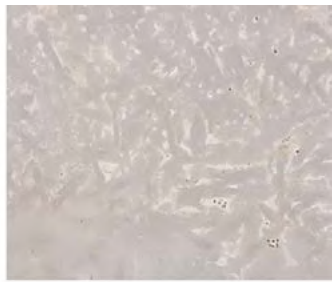


**BLUESTONE CUT STONE (THERMALLED)** br bn bh sb sa th ve  
Shadow ♦



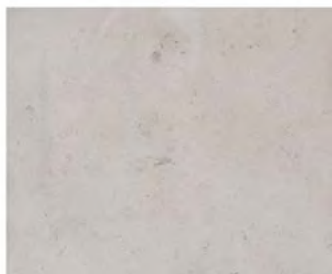
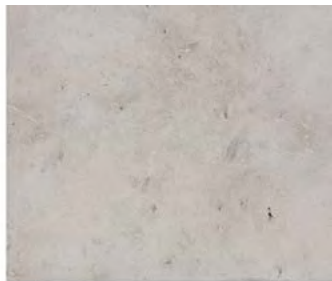
**ROYAL BELUGA CUT STONE (THERMALLED)** br bn bh sb sa th ve  
Shadow ♦





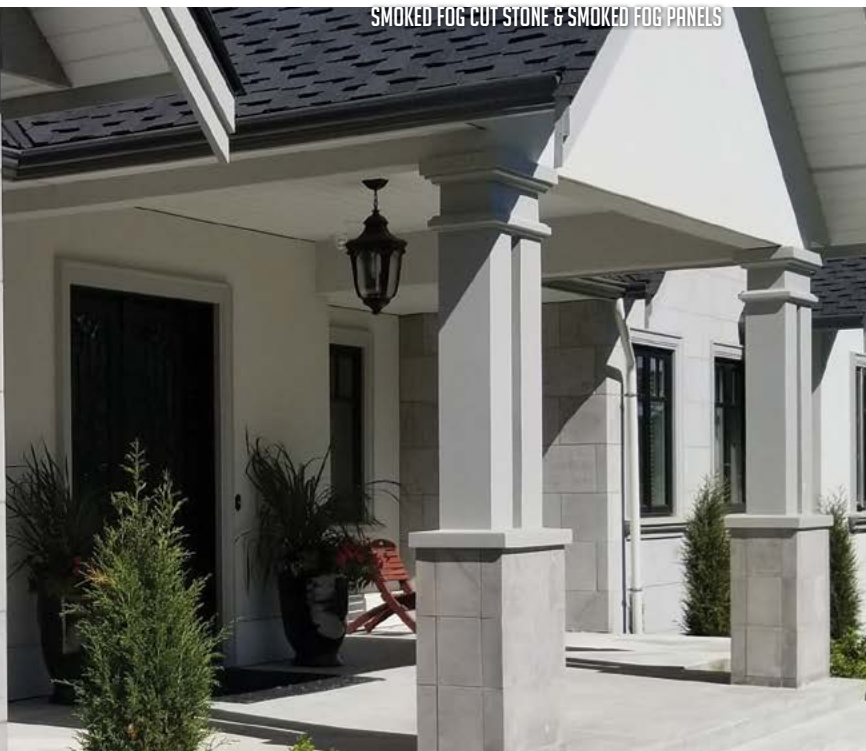
**ST. MARY CREAM CUT STONE [SANDED]** br bh nt sb sa ve  
 Arctic ♦

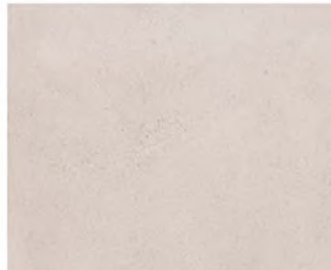
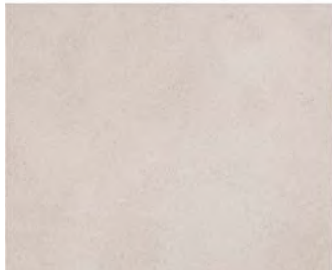
**CHILTON CUT STONE [NATURAL CLEFT]** nt  
 Sky ♦ Fiery ♦



**SMOKED FOG CUT STONE [SANDED]** br bh sb sa ve  
 Shadow ♦

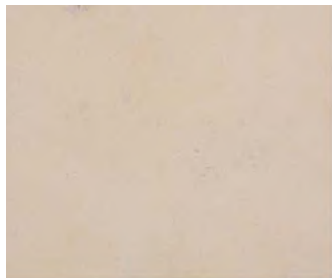
**FOND DU LAC CUT STONE [NATURAL CLEFT]** nt  
 Arctic ♦





**INDIANA BUFF CUT STONE [SANDED]** br bh sb sa ve  
Arctic ♦

**RUSTIC BUFF CUT STONE [SANDED]** br bh sb sa ve  
Arctic ♦

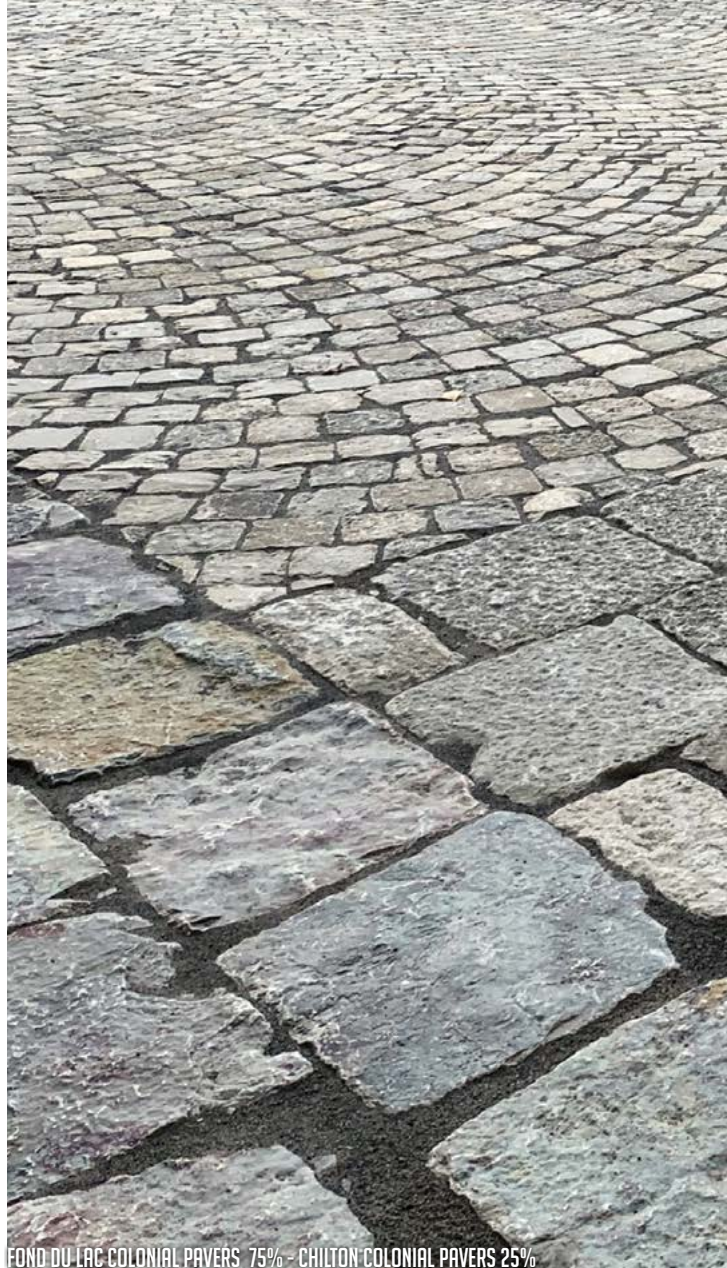


**TEXAS CREAM CUT STONE [SANDED]** br bh sb sa ve  
Arctic ♦

**INDIANA SILVERBUFF CUT STONE [SANDED]** br bh sb sa ve  
Arctic ♦



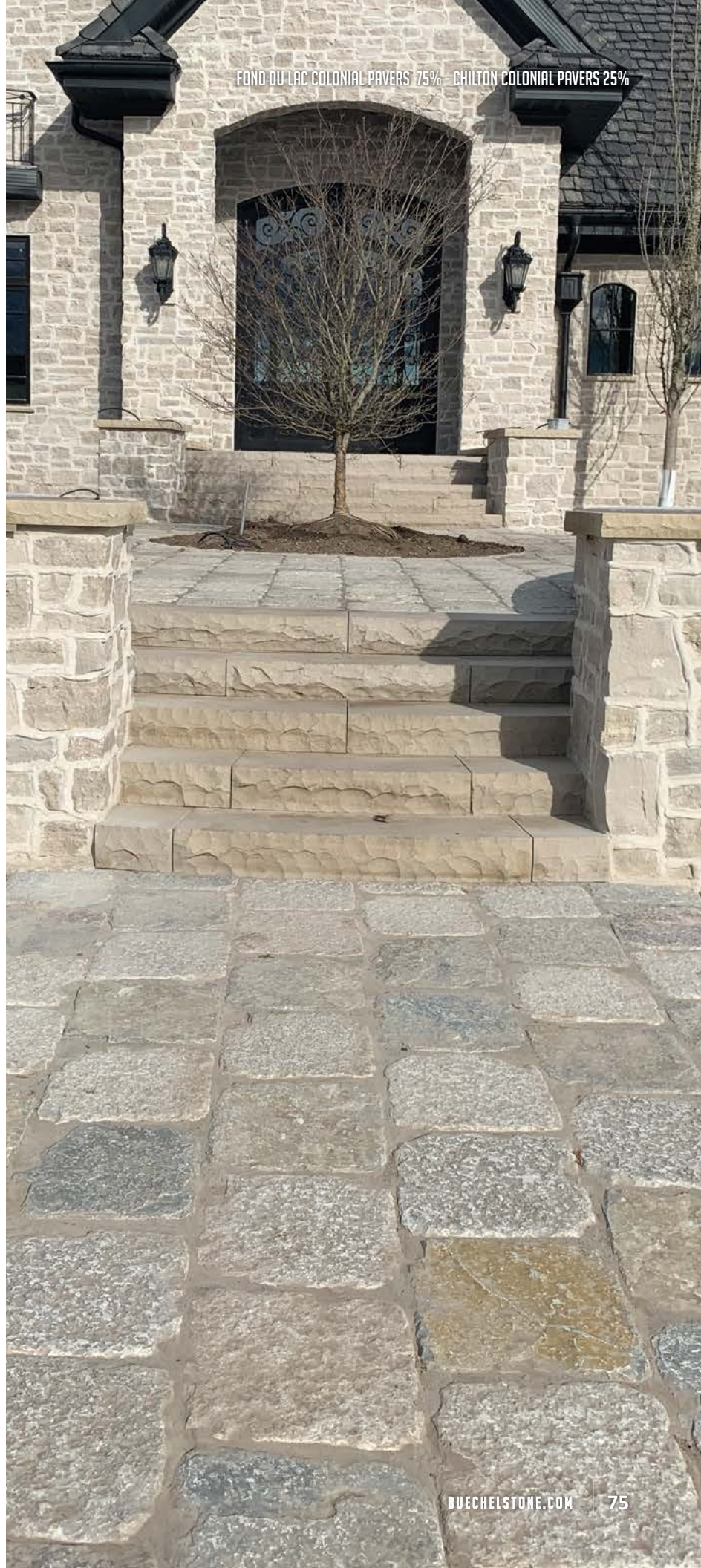
FOND DU LAC COLONIAL PAVERS 75% - CHILTON COLONIAL PAVERS 25%



FOND DU LAC COLONIAL PAVERS 75% - CHILTON COLONIAL PAVERS 25%

FOND DU LAC COLONIAL PAVERS 75% - CHILTON COLONIAL PAVERS 25%





FOND DU LAC COLONIAL PAVERS 75% - CHILTON COLONIAL PAVERS 25%



**GRANITE COBBLES AND BOULDERS**

Fiery ♦ Shadow ♦



**DOOR COUNTY COBBLES AND BOULDERS**

Arctic ♦



**FOND DU LAC RANDOM BOULDERS**

Arctic ♦





### CHILTON WEATHEREDGE OUTCROPPING STEPS

Earth ♦ Fiery ♦



### CHILTON WEATHEREDGE OUTCROPPINGS

Earth ♦ Fiery ♦

CHILTON WEATHEREDGE OUTCROPPINGS



# LANDSCAPE



**FOND DU LAC WEATHEREDGE OUTCROPPING STEPS**  
Honey ♦



**FOND DU LAC WEATHEREDGE OUTCROPPINGS**  
Honey ♦



**MILL CREEK OUTCROPPINGS**  
Honey ♦



**GOLDENROD OUTCROPPINGS**  
Honey ♦



**CHILTON OUTCROPPING STEPS**  
Sky ♦



**CHILTON OUTCROPPINGS**  
Sky ♦



**FOND DU LAC OUTCROPPINGS**  
Arctic ♦



**FOND DU LAC OUTCROPPING STEPS**  
Arctic ♦



**PEARL GRAY OUTCROPPINGS**  
Arctic ◆



**MILL CREEK PATTERNED FLAGSTONE [THERMALIZED SHOWN]**  
Honey ◆ Sky ◆



CHILTON STEPPERS WITH CHILTON COUNTRY SQUIRE



### CHILTON COLONIAL PAVERS

Sky ♦ Shadow ♦



### BLUESTONE FLAGSTONE

Shadow ♦



### CHILTON FLAGSTONE AND/OR CHILTON STEPPERS

Sky ♦



### BLUESTONE PATTERNED FLAGSTONE (NATURAL CLEFT)

Shadow ♦

BLUESTONE PATTERNED FLAGSTONE THERMALLED - CHILTON CUT STONE



**BLUESTONE PATTERNED FLAGSTONE (THERMALLED)**  
Shadow ♦



**SILVER PATINA STEPPERS**  
Shadow ♦



**BLACK FROST STEPPERS**  
Shadow ♦



**FOND DU LAC FLAGSTONE AND/OR FOND DU LAC STEPPERS**

Arctic ♦



**FOND DU LAC COLONIAL PAVERS**

Arctic ♦

**FOND DU LAC COLONIAL PAVERS WITH MILL CREEK SIENA**







**CHILTON WEATHEREDGE STEPS**  
Earth ♦ Fiery ♦



**FOND DU LAC WEATHEREDGE OUTCROPPING STEPS**  
Honey ♦



**MILL CREEK SNAPPED STEPS**  
Honey ♦



**FOND DU LAC WEATHEREDGE STEPS**  
Honey ♦



**CHILTON OUTCROPPING STEPS**  
Sky ♦



**CHILTON SNAPPED STEPS**  
Sky ♦



**FOND DU LAC SNAPPED STEPS**

Arctic ♦



**FOND DU LAC OUTCROPPING STEPS**

Arctic ♦





**CHILTON WEATHEREDGE WALL STONE**  
Earth ♦ Fiery ♦



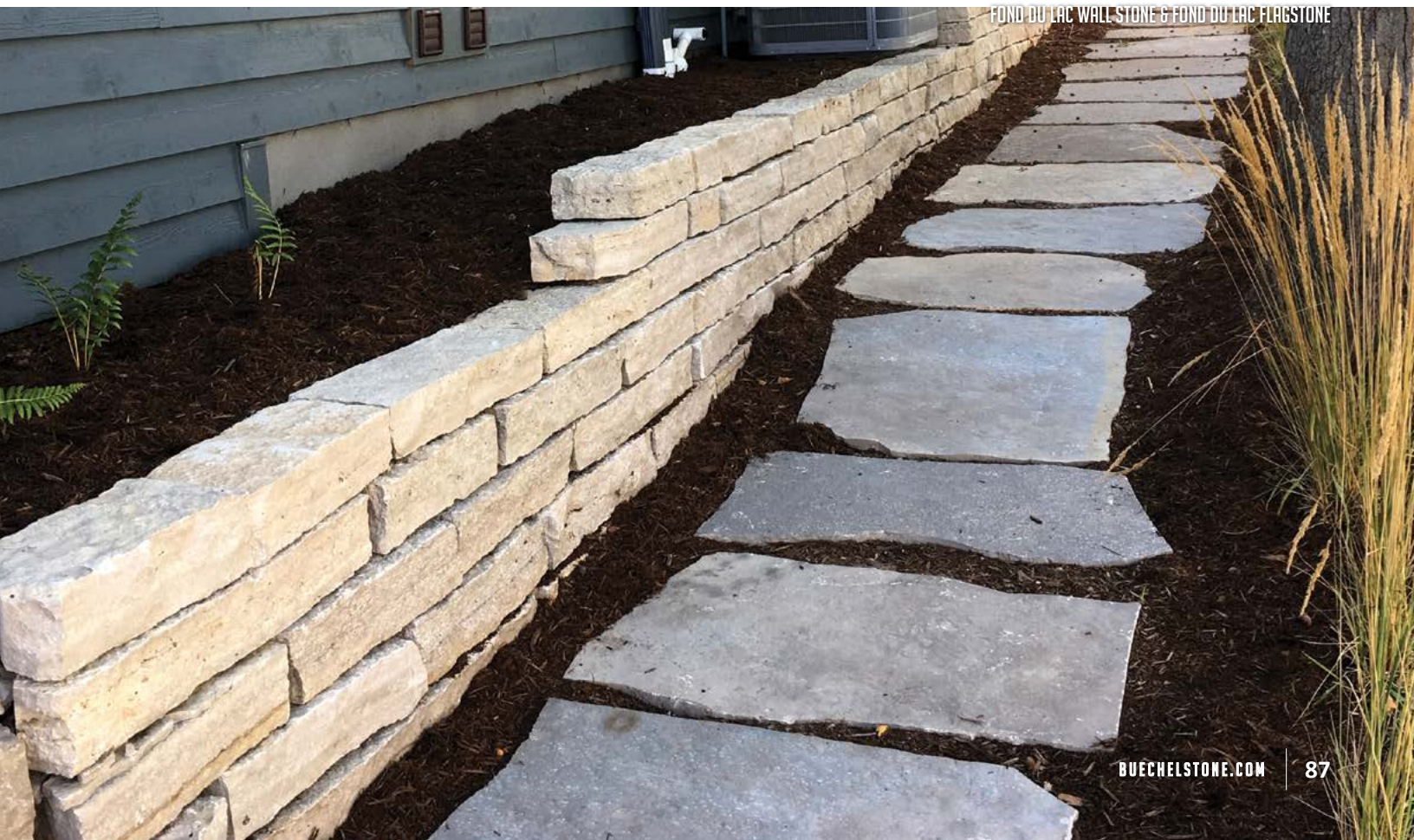
**FOND DU LAC WEATHEREDGE WALL STONE**  
Honey ♦



**CHILTON WALL STONE**  
Sky ♦



**FOND DU LAC WALL STONE**  
Arctic ♦



FOND DU LAC WALL STONE & FOND DU LAC FLAGSTONE

# PRODUCT NAME

# PAGE

<b>A</b>			
Aged Parchment Cut Stone	70	Chilton Wall Stone	87
Aged Parchment Tailored Blend	38	Chilton Weatheredge Outcroppings	77
Antique Black Castle Rock	35	Chilton Weatheredge Outcropping Steps	77
Antique Black Webwall	59	Chilton Weatheredge Steps	85
Antique Bronze Country Castle Rock	33	Chilton Weatheredge Wall Stone	87
Antique Bronze Fieldstone	57	Chilton Webwall	61
Antique Copper Country Castle Rock	32	Cinnamon Bark LedgeStone	50
Antique Copper Fieldstone	56	Colonial Gray River Rock	26
Aqua Terra Webwall	60	Cream City River Rock	28
Autumn Siena	44	<b>D</b>	
<b>B</b>		Door County Cobbles	60
Barnwood Blue Ashlar	24	Door County Cobbles & Boulders	76
Barnwood Blue Castle Rock	35	<b>F</b>	
Barnwood Blue LedgeStone	52	Fond du Lac Cambrian Blend	28
Barnwood Blue Siena	46	Fond du Lac Castle Rock	35
Barnwood Blue Tailored Fieldledge	65	Fond du Lac Colonial Pavers	83
Barnwood Blue Webwall	60	Fond du Lac Country Squire	27
Black Frost Ashlar	24	Fond du Lac Country Squire Jumpers	27
Black Frost Castle Rock	35	Fond du Lac Custom Country Blend	27
Black Frost LedgeStone	51	Fond du Lac Cut Stone	72
Black Frost Siena	46	Fond du Lac Flagstone and/or	83
Black Frost Steppers	82	Fond du Lac Steppers	83
Black Frost Tailored Fieldledge	64	Fond du Lac Heritage Blend	47
Black Frost Webwall	60	Fond du Lac Kensington Blend	29
Blue Ridge River Rock	61	Fond du Lac LedgeStone	52
Bluestone Cut Stone	71	Fond du Lac Outcroppings	79
Bluestone Flagstone	81	Fond du Lac Outcropping Steps	79
Bluestone Patterned Flagstone (Thermalled)	82	Fond du Lac Random Boulders	76
Bluestone Patterned Flagstone (Natural Cleft)	81	Fond du Lac Rustic	21
Brushed Steel Webwall	59	Fond du Lac Rustic LedgeStone	50
Buff Gray Castle Rock	35	Fond du Lac Shabby-Chic Tailored Blend	41
Buff Gray Tailored Blend	39	Fond du Lac Snapped Steps	86
Byron River Rock	61	Fond du Lac Tailored Blend	41
<b>C</b>		Fond du Lac Tailored Blend 50% Rockfaced	41
Cabin Creek River Rock	24	Fond du Lac Tailored Fieldledge	65
Chantilly Lace Cut Stone	68	Fond du Lac Wall Stone	87
Charcoal Country Squire	26	Fond du Lac Weatheredge Outcroppings	78
Chilton Cambrian Blend	26	Fond du Lac Weatheredge Outcropping Steps	78 & 85
Chilton Colonial Pavers	81	Fond du Lac Weatheredge Steps	85
Chilton Country Squire	25	Fond du Lac Weatheredge Wall Stone	87
Chilton Country Squire Jumpers	25	Fond du Lac Webwall	61
Chilton Custom Country Blend	26	Fossil Spire Cut Stone	71
Chilton Cut Stone	72	Full Color Castle Rock	32
Chilton Flagstone and/or Chilton Steppers	81	<b>G</b>	
Chilton Heritage Blend	46	Goldenrod Outcroppings	78
Chilton Kensington Blend	24	Granite Cobbles	59
Chilton LedgeStone	52	Granite Cobbles & Boulders	76
Chilton Outcroppings	78	<b>H</b>	
Chilton Outcropping Steps	78 & 85	Harvest Straw Cut Stone	68
Chilton Rustic	22	Highland Scotch Ashlar	23
Chilton Rustic - No Reds	22	Highland Scotch Castle Rock	33
Chilton Rustic LedgeStone	50	Highland Scotch LedgeStone	50
Chilton Sedona Rustic	22	Highland Scotch Siena	45
Chilton Snapped Steps	85	Highland Scotch Tailored Fieldledge	64
Chilton Shabby-Chic Tailored Blend	40	Highland Scotch Webwall	57
Chilton Tailored Blend	38	<b>I</b>	
Chilton Tailored Blend 50% Rockfaced	39	Indiana Buff Cut Stone	73
Chilton Tailored Fieldledge	64	Indiana Dimensional	40
		Indiana Silverbuff Cut Stone	73
		<b>J</b>	
		Jute Cloth Castle Rock	34
		Jute Cloth Country Squire	29
		Jute Cloth Tailored Blend	41
		<b>K</b>	
		Kohler Heritage Blend	47
		<b>M</b>	
		Mill Creek Castle Rock	33
		Mill Creek Colonial Blend	44
		Mill Creek Country Squire	23
		Mill Creek Cut Stone (Natural Cleft)	71
		Mill Creek Cut Stone (Thermalled)	70
		Mill Creek Kensington Blend	21
		Mill Creek Outcroppings	78
		Mill Creek Patterned Flagstone	80
		Mill Creek Siena	44
		Mill Creek Snapped Steps	85
		Mill Creek Tailored Blend	38
		Mill Creek Webwall	57
		<b>O</b>	
		Ozark Fieldstone	58
		<b>P</b>	
		Pearl Gray Outcroppings	80
		<b>R</b>	
		Royal Beluga Cut Stone	71
		Rustic Buff Cut Stone	73
		<b>S</b>	
		Shady Oak Castle Rock	33
		Silver Patina Ashlar	24
		Silver Patina Castle Rock	34
		Silver Patina LedgeStone	51
		Silver Patina Siena	46
		Silver Patina Webwall	59
		Silver Patina Steppers	82
		Silverdale Cut Stone	70
		Silverdale Tailored Blend	38
		Smoked Fog Cut Stone	72
		Spalted Oak Ashlar	24
		Spalted Oak Castle Rock	35
		Spalted Oak LedgeStone	51
		Spalted Oak Siena	45
		Spalted Oak Tailored Fieldledge	63
		Spalted Oak Webwall	60
		Split Granite Fieldstone	59
		St. Mary Cream Cut Stone	72
		Stratford Cross	26
		<b>T</b>	
		Tamarack Fieldstone	56
		Tamarack Siena	44
		Tennessee Splitface	22
		Texas Cream Cut Stone	73
		<b>W</b>	
		Whispering Pines Fieldstone	58
		Whispering Pines LedgeStone	52
		Whispering Pines Pioneer Blend	46
		White Country Squire	27



# 100-YEAR WARRANTY...

Our mission to provide the best, most dependable experience in the **NATURAL STONE INDUSTRY** - guaranteed; is coupled with a **100-YEAR WARRANTY**.

Upon completing our **WORRY-FREE CLIENT EXPERIENCE**, it's as simple as visiting our website at [www.buechelstone.com/warranty/](http://www.buechelstone.com/warranty/) and following the instructions to **SUBMIT** for your warranty. For a preview of everything the 100-year warranty entails, visit the PDF using the QR code.





BUECHEL STONE DESIGN CENTER IN KOHLER, WI

We hope our literature proves to be a great tool in assisting with your selection process. The facing of your project is a big decision. Because of that we offer personalized assistance - and well over 100 extensive full wall panel displays - at our Design Center in Kohler, Wisconsin. Contact us to schedule a visit. We'll be happy to assist with arranging the details for your best experience!



THEMART IN CHICAGO, IL





[WWW.BUECHELSTONE.COM](http://WWW.BUECHELSTONE.COM)

PH: 800.236.4473

[INFO@BUECHELSTONE.COM](mailto:INFO@BUECHELSTONE.COM)

CORPORATE OFFICE, WISCONSIN FABRICATION & QUARRIES: W3639 COUNTY HIGHWAY H | CHILTON, WI 53014

THE MART: 222 MERCHANDISE MART PLAZA SUITE 163 | CHICAGO, IL 60654

BUECHEL STONE DESIGN CENTER: THE SHOPS AT WOODLAKE | 765H WOODLAKE ROAD | KOHLER, WI 53044

NORTH CAROLINA FABRICATION & QUARRIES: 7274 US HWY 221 N. | MARION, NC 28752

KANSAS FABRICATION & QUARRIES: 1000 INDUSTRIAL BLVD | WINFIELD, KS 67156